

# NEOS MIL™





# NEOS™ - Overview

**NEOS™** Designed to enhance the operational efficiency of UXV platforms. By utilizing the power of the Aries NEOS™ DogBone, NEOS™ can provide battlefield commanders with multiple video feeds over tactical networks.

**NEOS™** allows users to Network & TAK enable the Full Motion Video of their sensor from the Ground Control System.

**NEOS™** allows users to stream multiple controlled video feeds concurrently over Mobile, Tactical & Command systems.

**NEOS™** is a low-voltage capability designed for extended operations. The system provides automatic network routing for rapid deployment and ease of use.

There is no configuration required and the tool has successfully integrated with Mission Systems such as TAK, APASS, MCH, and others.

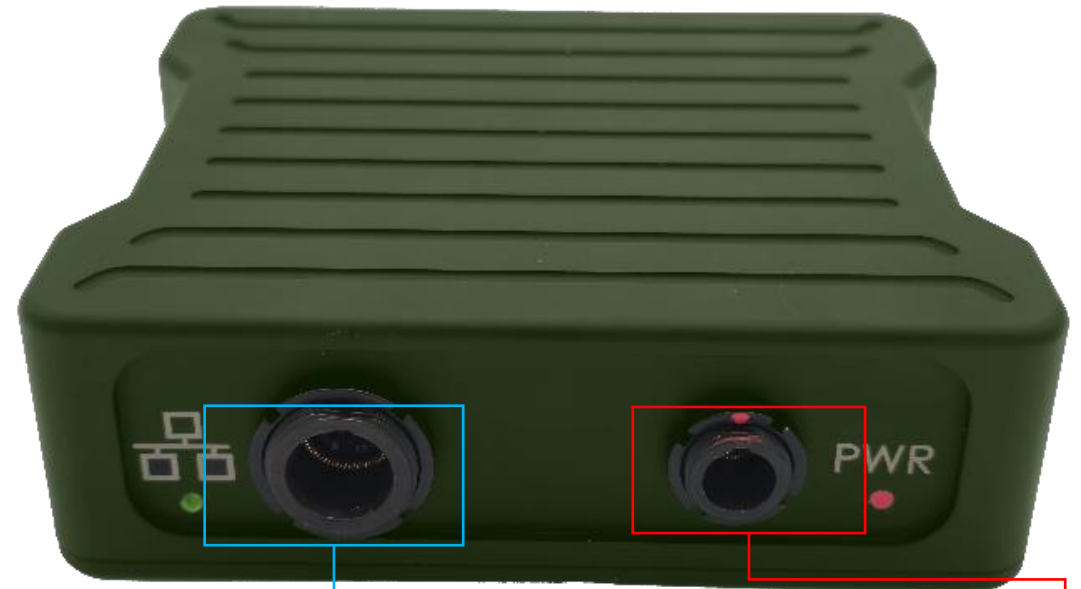




# NEOS™ - Overview



**USB Sensor Port**



**Ethernet**

**Power**



# NEOS™ - Configuration Guide

1

## Sensor Setup:

Connect the MIL connector Sensors (or USB Sensors). Then, plug the Sensor Cables into the NEOS USB Ports.

2

## Power Setup:

Connect the 2590 Battery into the charging cable. Then connect one cable to the NEOS Board (the other one is saved for the network switch).

3

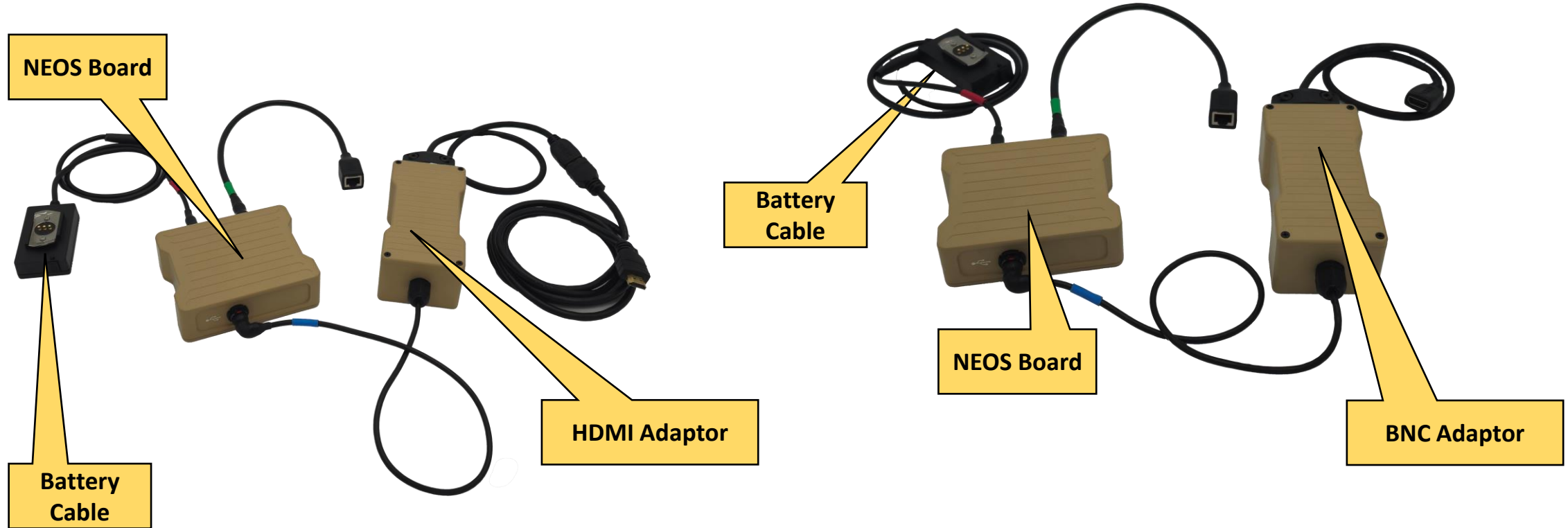
## Ethernet Setup:

Plug the ethernet adapter into the NEOS Board then plug an ethernet cable on the other side. Attach the other end of the ethernet cable into the network switch. Connect another Ethernet Cable into the Network Switch (Port 1-4) and plug the other end into an OTG Adapter (Micro or USB C). Finally Plug the OTG Adapter into the EUD.



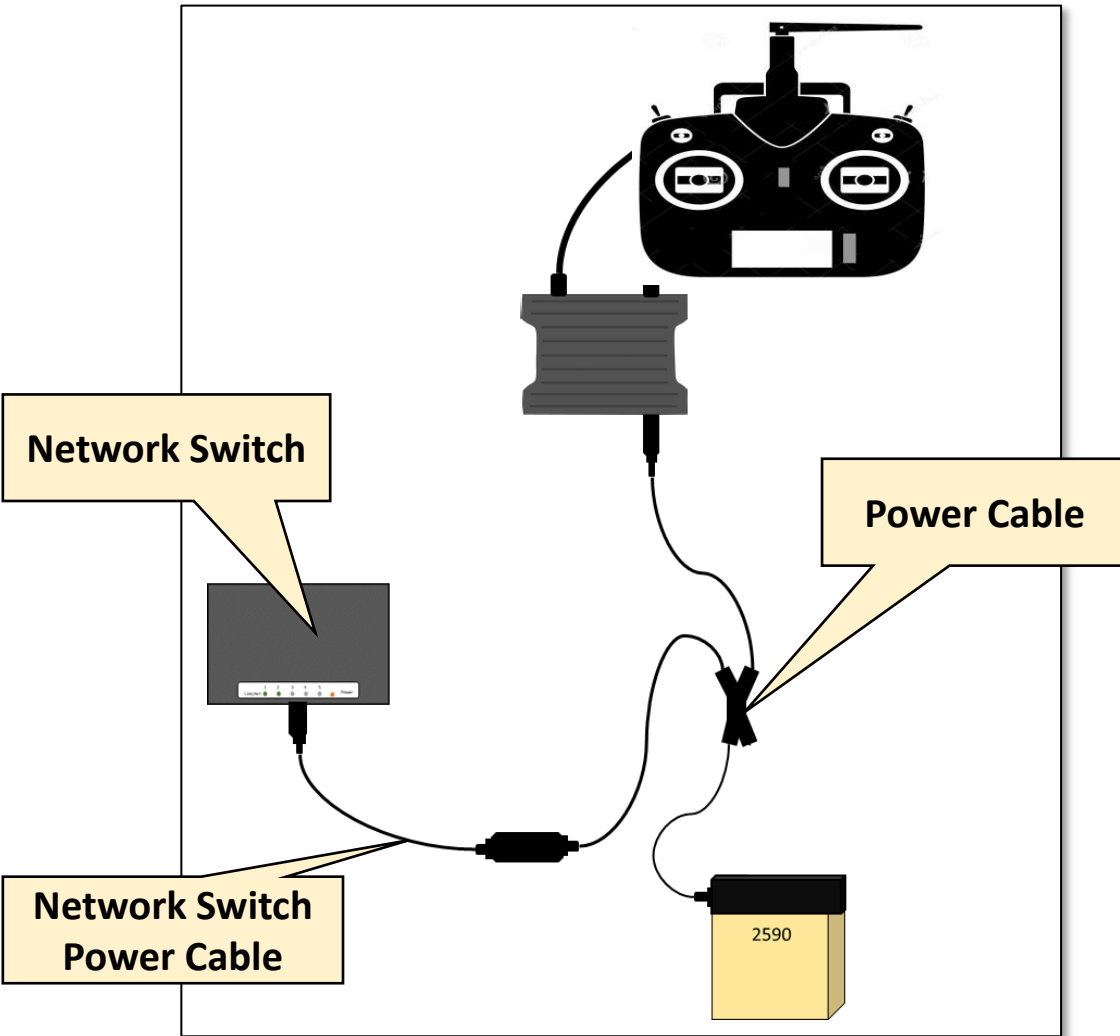


# NEOS™ - Sensor Setup





# NEOS™ - NEOS Power Setup



## What you will need

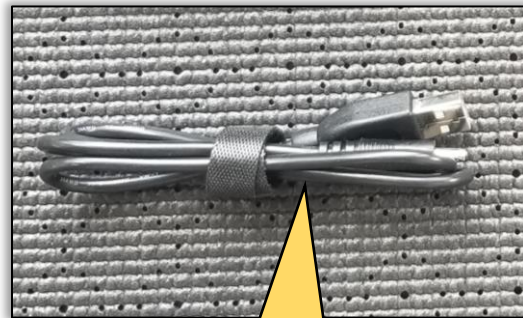
### Pelican Case

Item	Quantity
Power Cable	1
2590 Battery	1
Network Switch	1
Network Switch Power Cable	1



# NEOS™ - NEOS Power Setup

Network Switch

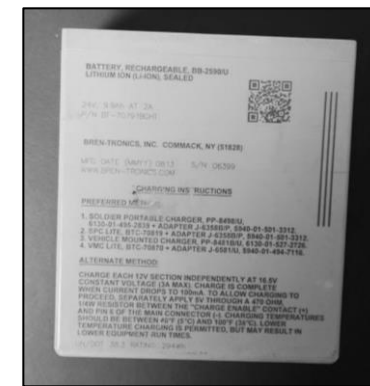


Network Switch  
Power Cable



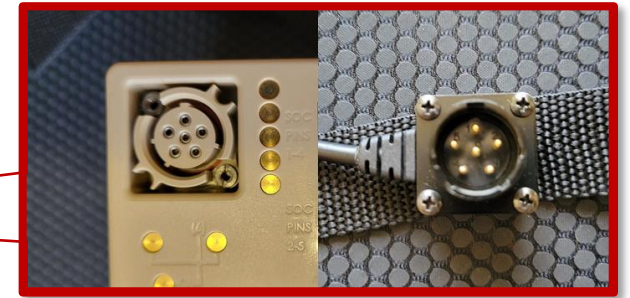
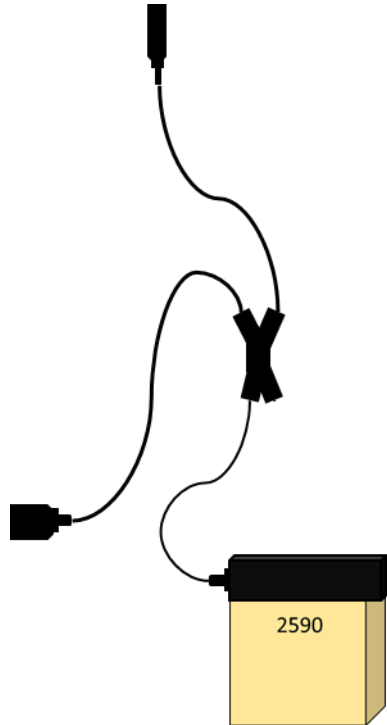
Power Cable  
(Alternative Dual battery  
cable pictured here)

2590 Battery





# NEOS™ - NEOS Power Setup



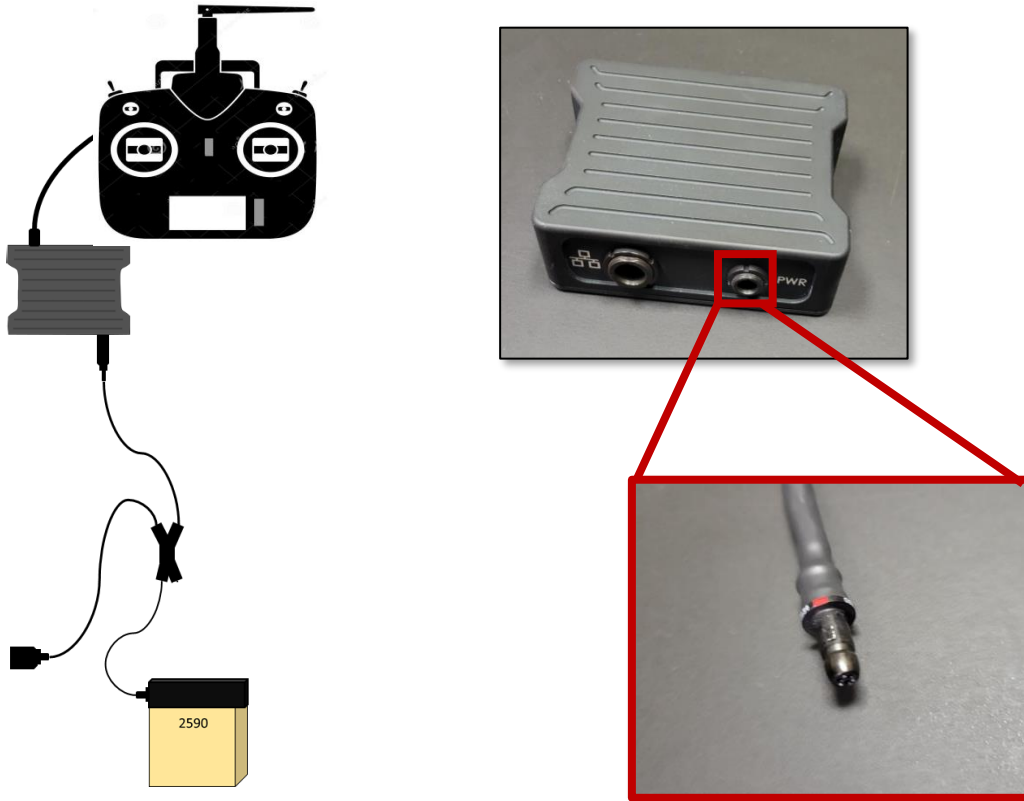
## Step 1:

Connect the 2590 to the power cable. Make sure the notches line up.

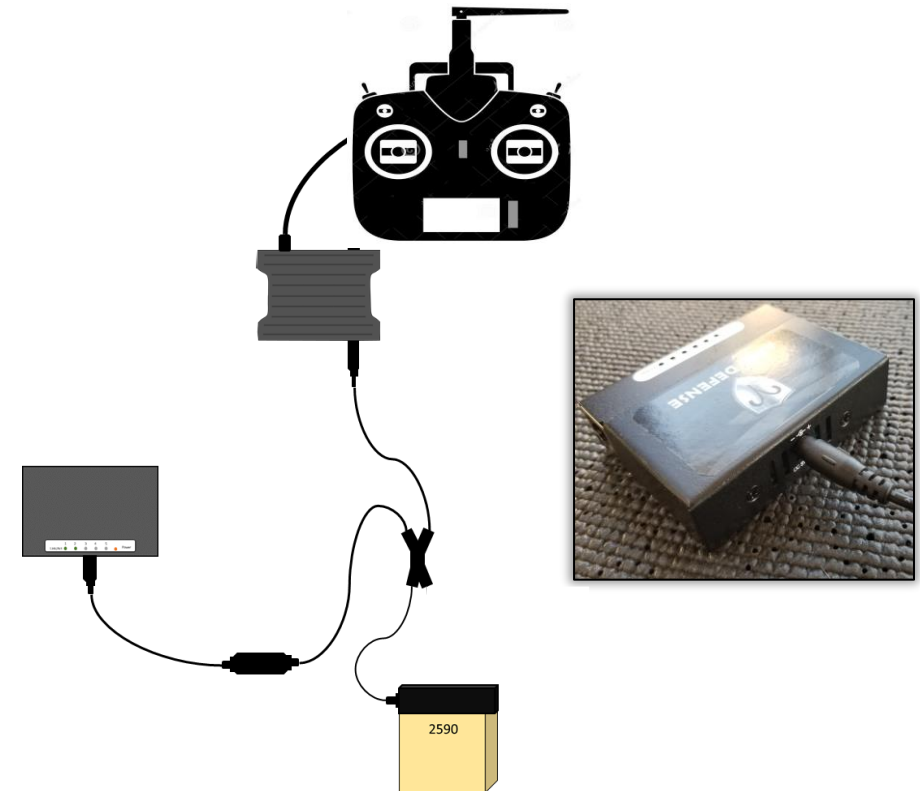




# NEOS™ - NEOS Power Setup



**Step 2:**  
Plug the power Cable into the NEOS Board.

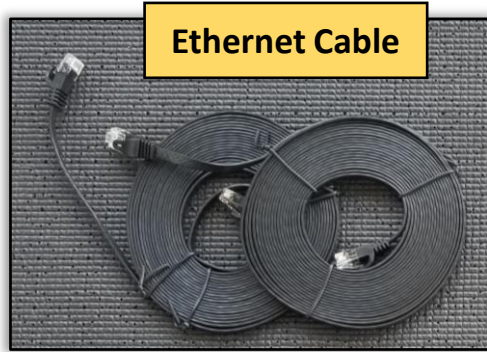


**Step 3:**  
Connect the Network Switch Power Cable to the Network Switch. After plug the other end into the main power cable.





# NEOS™ - Ethernet Setup



**Ethernet Cable**

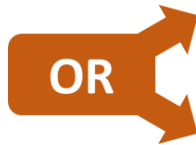


**Tablet**

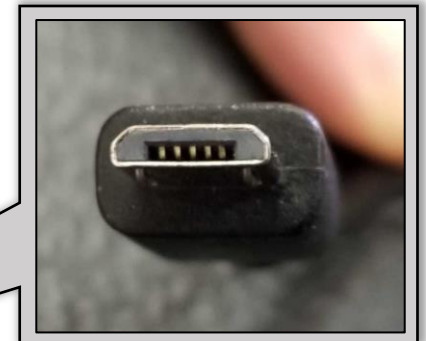
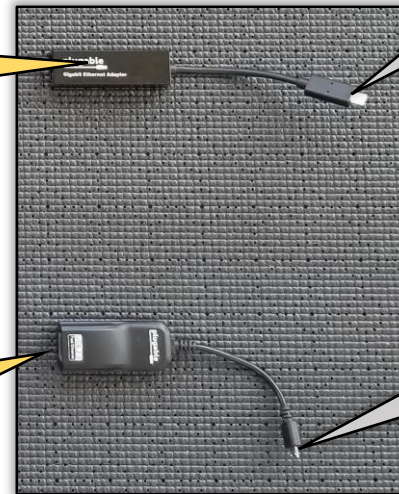


**Ethernet Adapter Cable**

**USB-C Ethernet On the Go (OTG) Adapter0**

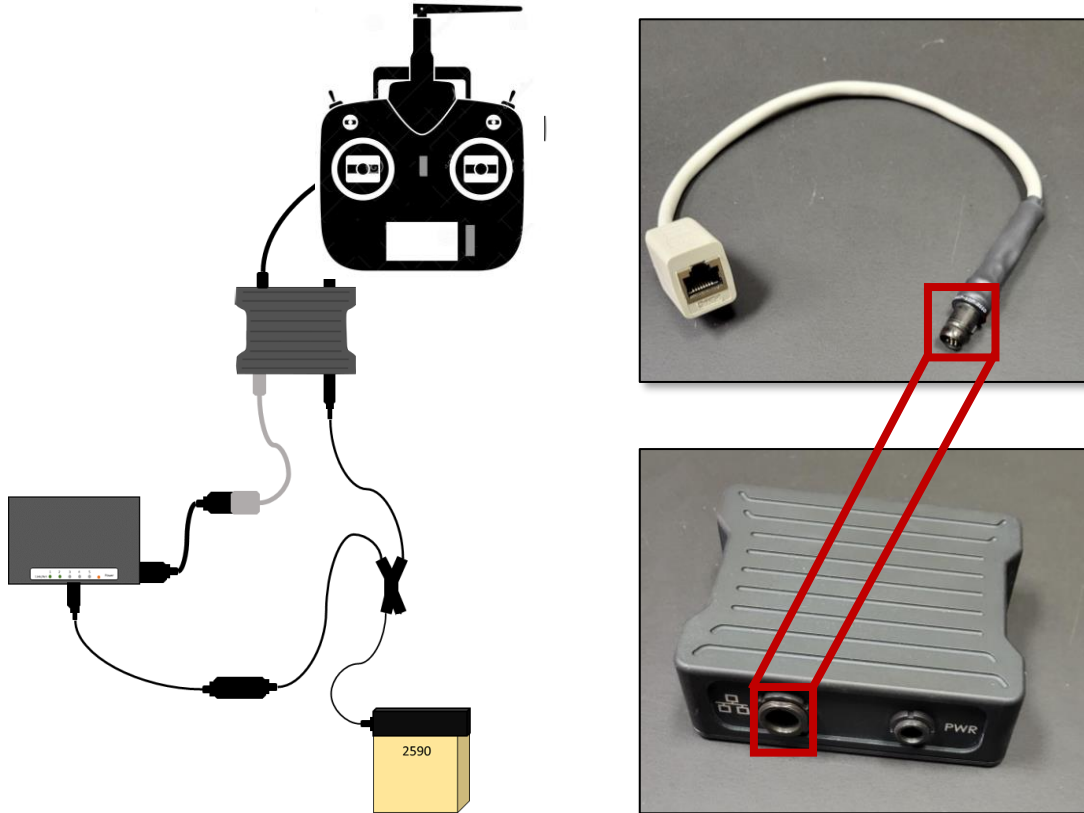


**Micro USB Ethernet On the Go (OTG) Adapter**





# NEOS™ - Ethernet Setup



## Step 1:

Plug the Ethernet adapter into the NEOS board.



## Step 2:

Connect the Ethernet Adapter to the network switch with an ethernet cable.



# NEOS™ - Ethernet Setup



## Step 3:

Plug an Ethernet Cable into the OTG Dongle.

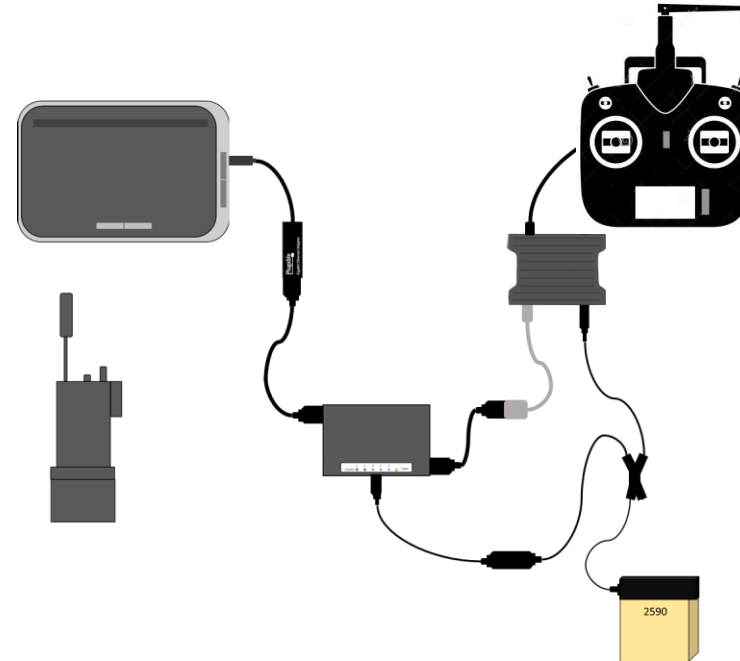


## Step 4:

Plug the OTG Dongle into the EUD.



# NEOS™ - Ethernet Setup



## Step 5:

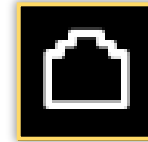
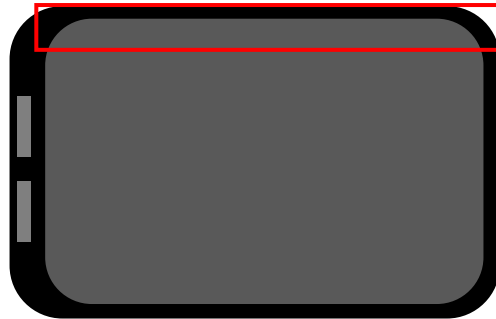
Connect the Ethernet Cable into the Network Switch (Port 1 -4).

## Step 6:

Proceed to the Final Check.



# NEOS™ - Ethernet Setup



This icon indicates the tablet/EUD detects a network connection



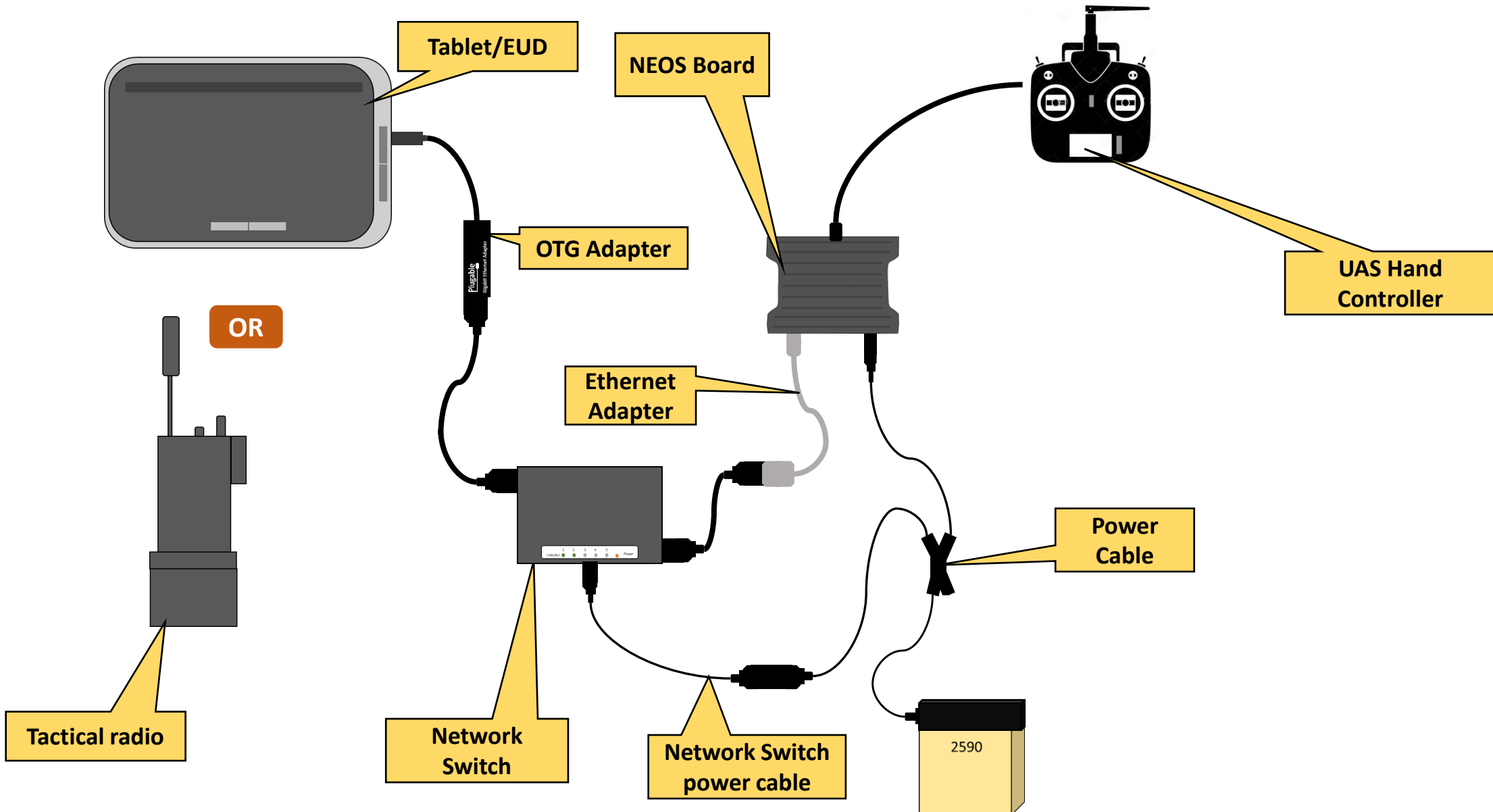
This icon indicates the tablet/EUD is receiving an IP address from the NEOS System

## Final Check:

Ensure your device is receiving a DHNEOS Connection to the NEOS Board. At the top of the device you will notice 2 ethernet icons



# NEOS™ - Complete Setup – UAS Hand Controller with Switch







**Aries Defense**